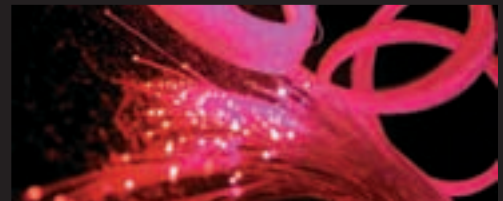
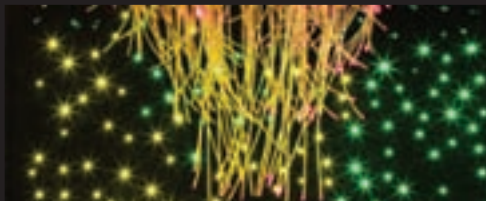
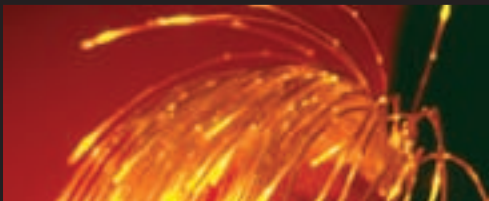
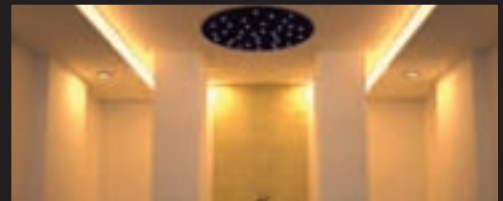
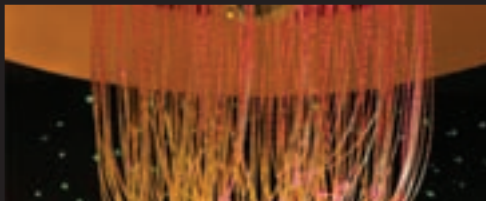
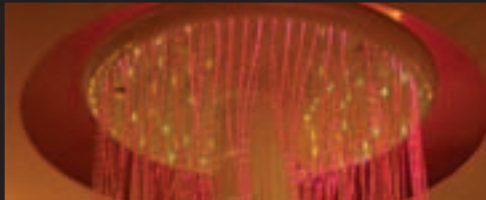


sensory lighting systems

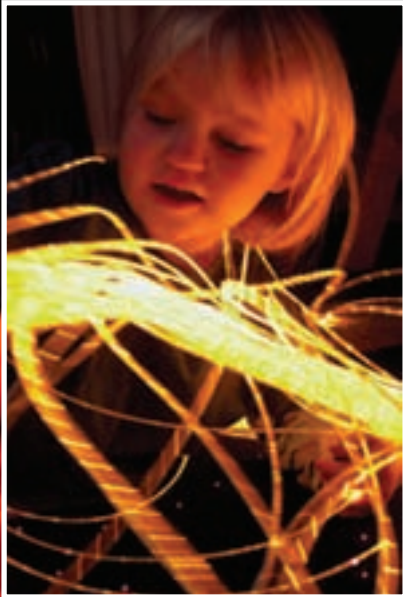


fibre optic sensory lighting

Universal Fibre Optics manufactures polymer sensory Sidesparkle fibre harnesses in-house. These harnesses consist of strands of polymer fibre enclosed in a clear sleeve. The PVC sheathing is certified as phthalate free. The fibre strands in these harnesses are cracked to let light escape from the sides.

When illuminated, the fibre produces a magical sparkling effect which can be coloured with the use of a light source with an inbuilt colour wheel.

These kits include a 75W tungsten halogen light source with a pre-installed six colour colourwheel and a sensory Sidesparkle harness - the length and number of tails in the harness varies by kit part number.



kit contents

Our sensory lighting kits are supplied with the following items as standard...

75W light source (single feed to lamp & wheel)

colourwheel

sensory harness



Choice of black or white heavy duty light source



colourwheel colours

clear	
red	
magenta	
blue	
green	
yellow	



The harness is available in two sizes. Supersafe Sidesparkle which has an outer diameter of 2.6mm and Stariflex Sidesparkle with an outer diameter of 7mm. See page 14 for more information on these harnesses.

available as a complete kit or as harness only

These kits are ideal for use in home environments, as well as in sensory treatment and play rooms in schools and hospitals.

The absence of electricity in the fibre tails makes them completely safe to touch. With the use of polymer fibre - unlike the majority of kits on the market which use glass fibre - there is no risk of chewing through to glass fibre.

The kits can be installed in a permanent location or placed on the floor to play with.



see
page 14 for
separate
sensory harness
specifications

harness details

Fibre harness are made from a number of tails of fibre and are fitted with a standard 30mm common end

fibre optic tail quantities and lengths	complete kit ordering code	
	supersafe harness	stariflex harness
100 x 1.0 metre	SE1001	STF1001
100 x 2.0 metres	SE1002	STF1002
150 x 2.0 metres	SE1502	STF1502
100 x 3.0 metres	SE1003	STF1003
200 x 2.0 metres	SE2002	STF2002
150 x 3.0 metres	SE1503	STF1503
200 x 3.0 metres	SE2003	STF2003
200 x 4.0 metres	SE2004	STF2004

harness only ordering code	
supersafe harness	stariflex harness
SEN-100-1-CL	STF-100-1-CL
SEN-100-2-CL	STF-100-2-CL
SEN-150-2-CL	STF-150-2-CL
SEN-100-3-CL	STF-100-3-CL
SEN-200-2-CL	STF-200-2-CL
SEN-150-3-CL	STF-150-3-CL
SEN-200-3-CL	STF-200-3-CL
SEN-200-4-CL	STF-200-4-CL

custom options

In addition to the standard kits, we can create a customised solution to suit your requirements...



Optional twinkle wheel



Optional remote control system

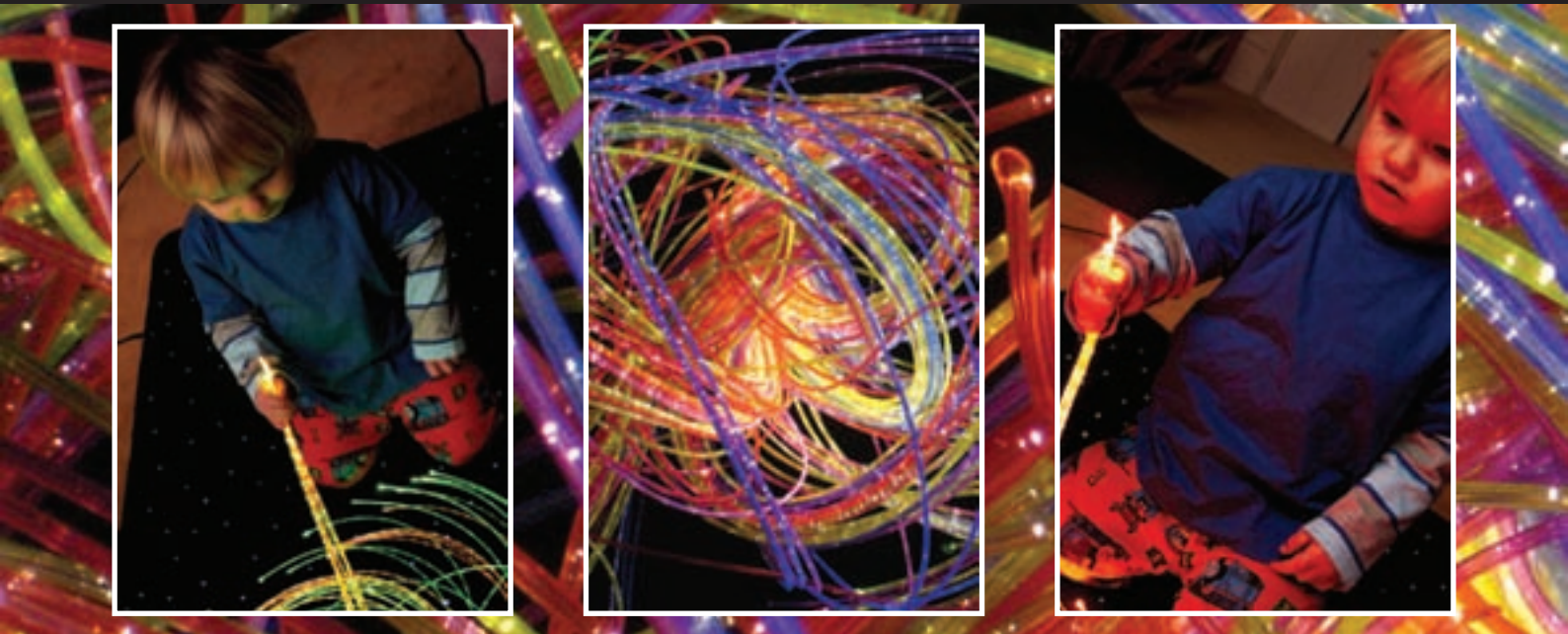
Harnesses	Custom tail lengths and number of tails
Light source	Upgrade to a more powerful 100W halogen light source or a separate feed model for optional remote control
Colourwheel	The optional Varicolour wheel lets you personalise the colours in your colourwheel - you can choose up to six colours from a choice of sixteen

fibre optic uv reactive sensory lighting

Universal Fibre Optics manufactures UV sidesparkle fibre in-house. These harnesses consist of strands of polymer fibre enclosed in coloured sleeves. The PVC sleeving is certified as phthalate free. The fibre strands in these harnesses are cracked to let light escape from the sides.

As well as producing the same sparkle effect as the standard sensory harnesses, the tails in these harnesses also glow dramatically under UV black light. Even without the addition of UV light, these harnesses in conjunction with the twinkle wheel can produce a stunning shimmering effect. A colourwheel is not necessary due to the harness being coloured.

These kits include a 75W tungsten halogen light source with a pre-installed twinkle wheel and a UV sensory sidesparkle harness - the length and number of tails in the harness varies by kit part number.



kit contents

Our sensory lighting kits are supplied with the following items as standard

75w light source (single feed to lamp & wheel)

twinkle wheel

uv sensory harness



Choice of black or white heavy duty light source

standard harness colours

orange	
red	
purple	
blue	
green	
yellow	



The harness is available in two sizes. Supersafe sidesparkle which has an outer diameter of 2.6mm and Stariflex Sidesparkle with an outer diameter of 7mm. See page 14 for more information on these harnesses.

available as a complete kit or as harness only

These kits are ideal for use in home environments, as well as in sensory treatment and play rooms in schools and hospitals.

The absence of electricity in the fibre tails makes them completely safe to touch. With the use of polymer fibre - unlike the majority of kits on the market which use glass fibre - there is no risk of chewing through to glass fibre.

The kits can be installed in a permanent location or placed on the floor to play with.



harness details

Fibre harness are made from a number of tails of fibre and are fitted with a standard 30mm common end

Fibre optic tail quantities and lengths	Complete kit ordering code	
	UV supersafe harness	UV stariflex harness
100 x 1.0 metre	UV1001	SUV1001
100 x 2.0 metres	UV1002	SUV1002
150 x 2.0 metres	UV1502	SUV1502
100 x 3.0 metres	UV1003	SUV1003
200 x 2.0 metres	UV2002	SUV2002
150 x 3.0 metres	UV1503	SUV1503
200 x 3.0 metres	UV2003	SUV2003
200 x 4.0 metres	UV2004	SUV2004

Harness only ordering code	
UV supersafe harness	UV stariflex harness
SEN-100-1-UV	STF-100-1-UV
SEN-100-2-UV	STF-100-2-UV
SEN-150-2-UV	STF-150-2-UV
SEN-100-3-UV	STF-100-3-UV
SEN-200-2-UV	STF-200-2-UV
SEN-150-3-UV	STF-150-3-UV
SEN-200-3-UV	STF-200-3-UV
SEN-200-4-UV	STF-200-4-UV

custom options

In addition to the standard kits, we can create a customised solution to suit your requirements...



Optional colour wheel



Optional remote control system

Harnesses	Custom tail lengths and number of tails
Light source	Upgrade to a more powerful 100W halogen light source or a separate feed model for optional remote control
Colourwheel	The optional Varicolour wheel lets you personalise the colours in your colourwheel - you can choose up to six colours from a choice of sixteen

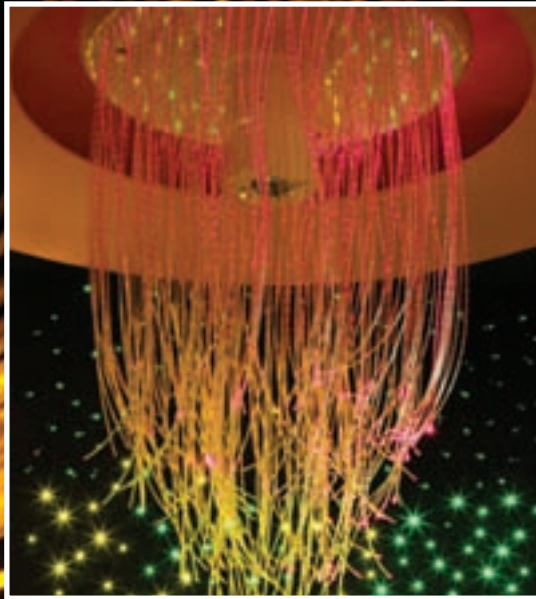
fibre optic solstice chandeliers

The Solstice range of fibre optic chandeliers from Unlimited Light are contemporary light sculptures which are designed to offer maximum impact in sensory and living spaces.

As standard, the Solstice is available in three different sizes and has two separate light source options - an integral light source, for use where access above the ceiling is not available and a remotely located light source which can be installed in the ceiling space above the chandelier. Both options allow full remote control of the chandelier.

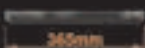
The fibre optic tails in the chandelier are made from 3 strand polymer Sidesparkle fibre and are arranged in multiple rings that are staggered in length with maximum drops ranging between 1 metre and 4 metres.

As well as the standard kits specified below, Universal Fibre Optics can manufacture these chandeliers in almost any size or shape and with tail lengths to suit your particular application.



base size options We offer 3 base sizes for ultimate flexibility...

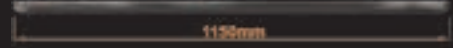
Mini Base



Midi Base



Maxi Base

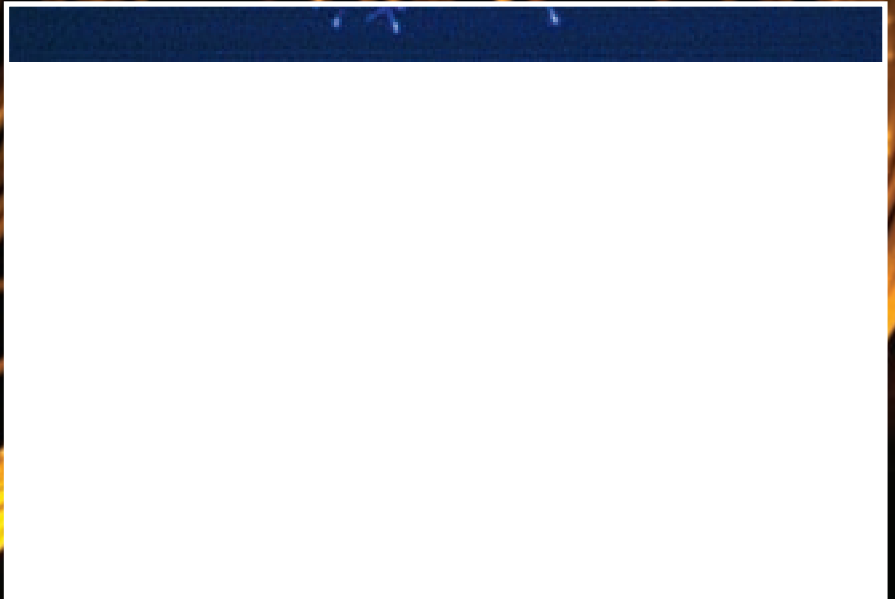
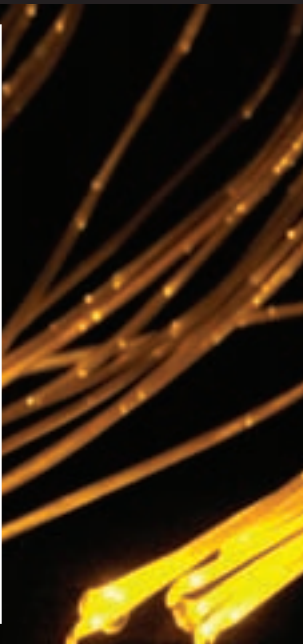


number of fibre optic tails in the chandelier

Base size	Ring 1 tails	Ring 2 tails	Ring 3 tails	Ring 4 tails	Ring 5 tails	Ring 6 tails	Ring 7 tails	Total tails
Mini	42	33	24	-	-	-	-	99
Midi	76	60	42	24	-	-	-	202
Maxi	84	73	65	48	38	30	16	354



Remote control fitted as standard to both light source types.



light source options

Choose from either an integral or an externally located light source...

light source option 1



Integral 100W light source is pre-fitted to the chandelier base.

This light source makes it possible to install a Solstice chandelier even in rooms where there is no access above the ceiling.

light source option 2



A separate Aurora 100W tungsten halogen light source.

This light source is suitable for installation in the ceiling space above the chandelier. Tails lengths can be supplied to allow for the light source to be located up to 4 metres from the chandelier.

fibre optic star ceiling kits

Create a starry night on in any room in the house by using our fibre optic star ceiling kit on your ceiling. This fibre optic star kit allows you to do just that.

Consisting of mixed diameter fibre for a 'near & far' effect, each fibre optic star kit comes with small acrylic fittings for a neat finish in the ceiling or chosen material. Unlike other systems on the market, these fittings allow for the fibre to pass all the way through, maintaining the preferred intense star effect achieved when the fibre end is exposed while covering up any ragged edges from the drill hole. Alternatively drill 1mm holes in the ceiling and just use the fibres on their own for an intense point of light.



kit contents

Star ceiling kits all come with following items as standard...

Model numbers: MS168 (50W light source), LS224 & XLS336 (75W light source)



Number of end fittings is dependant on kit



Model numbers: SS112 / SS112+1 (35W light source)



Optional remote control available on MS168, LS224 & XLS336 systems (see page 13)

Kit model no:	SS112	SS112+1	MS168	LS224	XLS336
Light source type	35W tungsten halogen	35W tungsten halogen	50W tungsten halogen	75W tungsten halogen	75W tungsten halogen
Colourwheel	4 colour plastic	4 colour plastic	6 colour glass	6 colour glass	6 colour glass
Number of tails	112 tails with lengths between 1.25m and 2.0m	112 tails with lengths between 2.25m and 3.0m	168 tails with lengths between 2.0m and 3.0m	224 tails with lengths between 1.0m and 4.5m	336 tails with lengths between 2.0m and 7.5m
End fittings	112 mushroom fittings	112 mushroom fittings	168 mushroom fittings	224 mushroom fittings	336 mushroom fittings

star carpets available as a complete kit or with carpet only

This range of high quality floor carpets have optical fibre woven into the pile.

A powerful 50W tungsten halogen light source with factory fitted 6 colour colourwheel provide a stunning shimmering effect of constantly changing colours.

The star carpet can be used on top of existing flooring or can be attached to a wall.

Please note that the carpet should not be used in areas where heavy wear is likely, such as doorways, and it is not suitable for use in areas where heavy weights may be pushed over it.



kit contents

Star carpet kits all come with following items as standard...

Black or white 50W light source

Six colour colourwheel

Star carpet



Or upgrade to a more powerful 100w light source

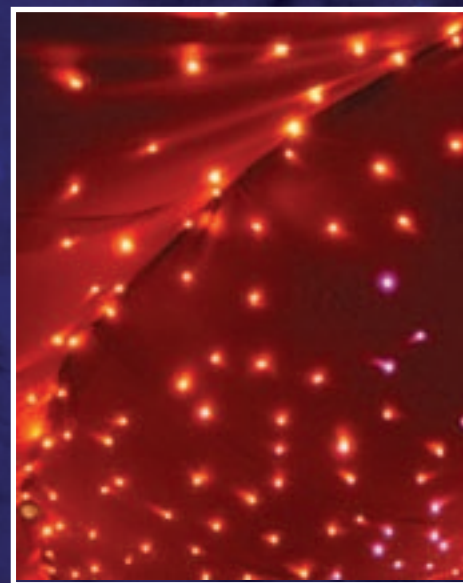
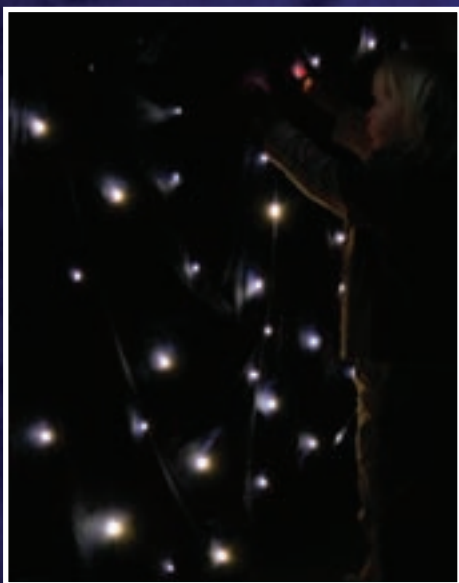
Kit model no:	STC1010	STC1015	STC1212	STC1435	STC2020	STC3030
Light source type	50W tungsten halogen	50W tungsten halogen	50W tungsten halogen	50W tungsten halogen	50W tungsten halogen	50W tungsten halogen
Colourwheel	6 colour glass	6 colour glass	6 colour glass	6 colour glass	6 colour glass	6 colour glass
Colours	High quality black, blue, red or white carpet, with fibre optic tails woven into the pile. other colours available at extra cost - please contact us for details.					
Tail lengths	1m as standard but can be customised to suit.					
Carpet size	1m x 1m	1m x 1.5m	1.25m x 1.25m	1.4m x 3.5m	2m x 2m	3m x 3m
Star carpet only ordering code	STCO1010	STCO1015	STCO1212	STCO1435	STCO2020	STCO3030

star cloths available as a complete kit or with star cloth only

Our range of fibre optic star cloths allow you to experience the beauty of the night sky indoors. The star cloth has ties on the top edge to allow it to be secured to a rail or other mounting system, as well as velcro mounting strips on the back.

Available in four different sizes and in three different colours, all variations can be purchased as part of a complete kit or separately for use with your own light source. The length of the fibre optic harness between the cloth and the light source connector can be specified on order.

If purchased as part of a complete kit, the star cloth is supplied with a 50w tungsten halogen light source with pre-installed six colour colourwheel. An upgrade to a more powerful 100W light source is also available.



kit contents

Star cloth kits all come with following items as standard...

Black or white 50w light source



Or upgrade to a more powerful 100w light source

Six colour colourwheel



Star cloth - choice of sizes - see table below



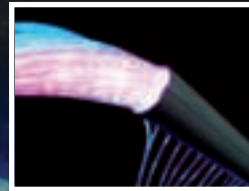
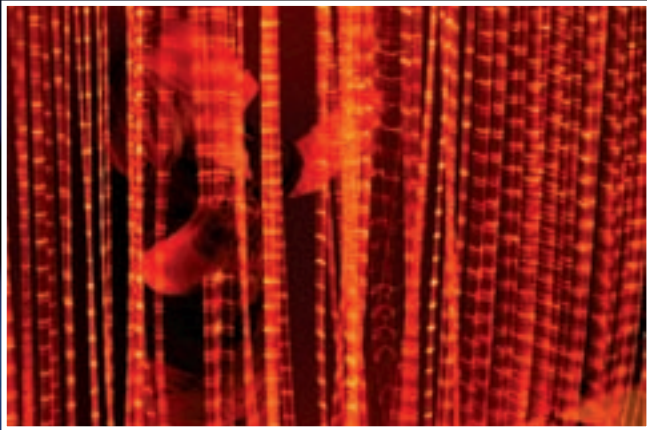
Kit model no:	SCLK2010	SCLK2020	SCLK3020	SCLK4020
Light source type	50W tungsten halogen	50W tungsten halogen	50W tungsten halogen	50W tungsten halogen
Colourwheel	6 colour glass	6 colour glass	6 colour glass	6 colour glass
Colours and material	High quality, flame retardant woollen serge material with tie-rings on top edge and velcro attached to backing. Available in black, blue or white.			
Tail lengths	The length of the fibre optic tails between the star cloth and light source can be specified at time of order.			
Cloth size	2m x 1m	2m x 2m	3m x 2m	4m x 2m
Cloth only ordering code	SCO2010	SCO2020	SCO3020	SCO4020

sensory wall tubes available as a complete kit or with tube only

An aluminium tube with long tails of sensory fibre cascading from its entire length.

Suitable for mounting on walls or above doors and windows, producing a shimmering curtain of light which is safe to play with, stand under and walk through.

The tube is finished in white and using the supplied colour changing light source, the tails will either continually change between six different colours or they can be left to shine in one static colour of your choice.



kit contents

Sensory wall tube kits all come with following items as standard...

Black or white 50w light source



Six colour colourwheel

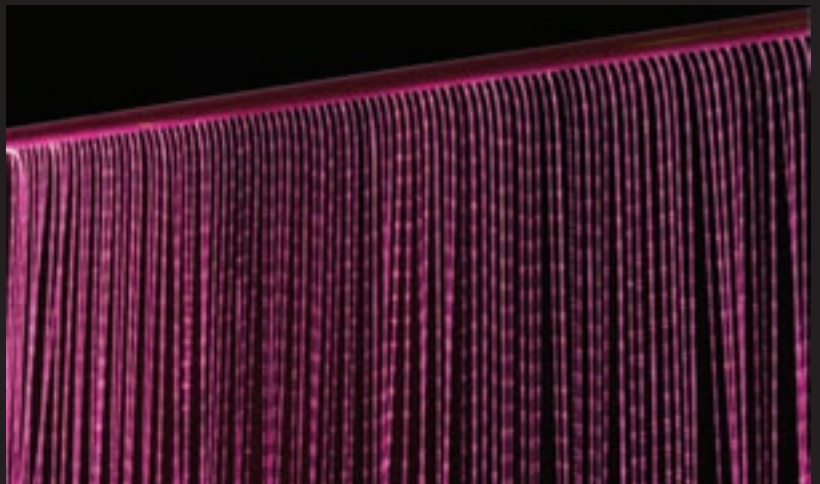


Sensory tube - choice of 1m or 1,5m length with fibre drops of 2m.



Or upgrade to a more powerful 100w light source

Kit model no:	SWT1020	SWT1520
Light source type	50W tungsten halogen	50W tungsten halogen
Colourwheel	6 colour glass	6 colour glass
Tube length	1m	1.5m
Tail lengths	66 tails at 2m	99 tails at 2m
Tube only ordering code	SWTO1020	SWTO1520



fibre optic star ceiling rings

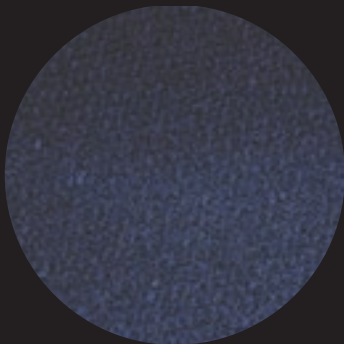
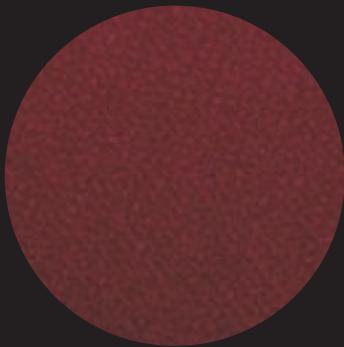
The fibre optic star cloth ceiling ring from Unlimited Light is an easy-install ceiling fixture which does not require access above the ceiling. A coloured cloth is mounted on a 1220mm diameter aluminium ring which has four fixing points for attaching to the ceiling.

Powered by a small LED light source which can be wired directly to a standard ceiling light fixture, the ceiling ring is available in a choice of two colours - plum red or midnight blue - and contains 70 fibre optic 'stars'. The light source automatically scrolls through six vibrant colours - green, red, pink, blue, turquoise and yellow.

The star cloth ceiling ring is both decorative and therapeutic and is ideal for snoezelen rooms, nurseries and bedrooms as well as dentists and beauty therapists treatment rooms.



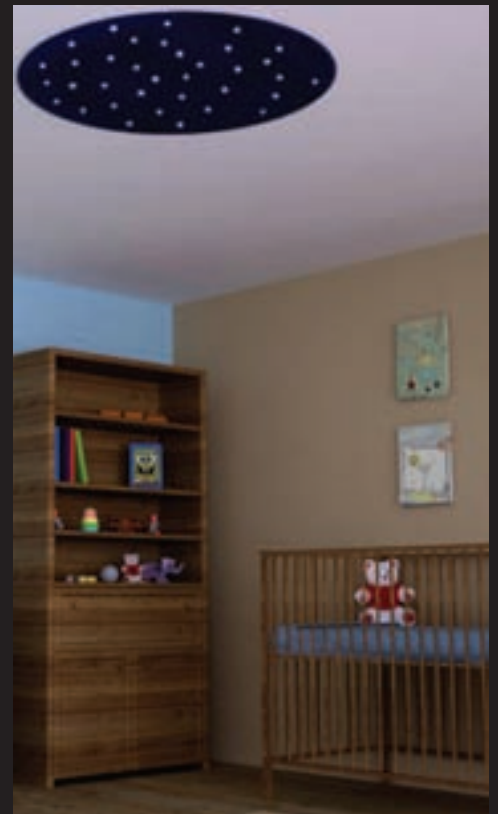
kit contents



The fibre optic star ceiling ring kit is supplied with a low voltage LED light source unit and you can choose from two colours of cloth - plum red or midnight blue.



Kit model no:	SCR70R	SCR70B
Light source type	Low voltage LED	Low voltage LED
Material colour	Plum red	Midnight blue



remote control option

Our range of light sources are all available with an optional RF remote control unit which operates at 433MHz.

Two models are available - the UIR1F, which is suitable for light sources with a single electrical feed, and the UIR2F for light sources with two separate feeds to allow control of the effects wheel motor independently.

Control is by a simple remote control keyfob. On model UIR1F, one button is used which switches all power to the light source on or off. Model UIR2F has two buttons which allow both the switching on/off of the light source as well as independently switching on or off the colour wheel to allow it to be paused on a static colour.

Note that remote control is provided as standard with our range of Solstice Chandeliers.



One connection required from power supply
 Two connections between remote unit and light source (UIR2F separate feed model)
 One connection between remote unit and light source (UIR1F single feed model)



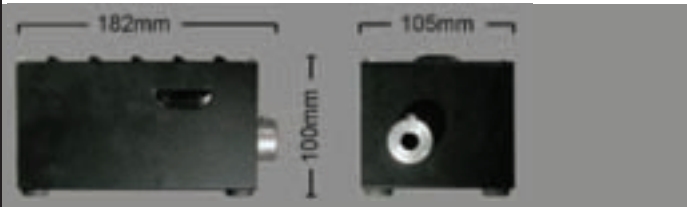
Remote control unit UIR2F



UIR2F keyfob switch

kit light source information

35W Tungsten Halogen Decorative



Order code	KL35W		
Port connector	12mm		
Fibre type	Plastic		
Supply voltage	240VAC 50Hz		
Lamp power	35W		
Power cord	Non-removable		

50W/75W/100W Aurora Tungsten Halogen Decorative



Order code	AU50W	AU75W	AU100W
Port connector	30mm	30mm	30mm
Fibre type	Plastic/glass	Plastic/glass	Plastic/glass
Supply voltage	240VAC 50Hz	240VAC 50Hz	240VAC 50Hz
Lamp power	50W	75W	100W
Power cord	IEC cable	IEC cable	IEC cable

50W/75W Heavy Duty Tungsten Halogen Decorative

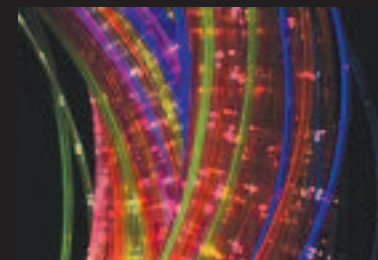


Order code	WHD50W	WHD75W	
Port connector	30mm	30mm	
Fibre type	Plastic/glass	Plastic/glass	
Supply voltage	240VAC 50Hz	240VAC 50Hz	
Lamp power	50W	75W	
Power cord	Non-removable	Non-removable	

harness specifications

polymer fibre technical specification

Item	Sidesparkle fibre specification	Stariflex fibre specification
Outer diameter	2.6mm	7mm
Core	3 x 0.75mm chipped fibres	12 x 1mm chipped fibres
Core material	Polymethyl methacrylate resin	Polymethyl methacrylate resin
Cladding material	Fluorinated polymer	Fluorinated polymer
Outer sheathing	Phthalate free PVC	Phthalate free PVC
Max. no. tails per harness	350	40
Max. run length	10m with either metal halide or tungsten halogen light source. metal halide gives brighter effect.	8m with either metal halide or tungsten halogen light source. Lengths of up to 3m give the best effect.



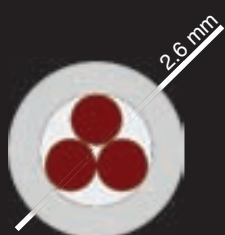
Both sizes of polymer fibre are optionally available with a uv reactive coating, colours available are red, green, yellow, orange, blue and purple.

polymer sidesparkle fibre

A decorative effect with the added safety of a polymer fibre core, ideal for multisensory environments, wall hanging and art installations. For indoor use only. Available with clear or coloured UV reactive sheathing for use in sensory rooms with black light.

ordering codes

No. tails and sizes	Super safe clear harness	Super safe UV harness
100 tails at 1m	SEN-100-1-CL	SEN-100-1-UV
100 tails at 2m	SEN-100-2-CL	SEN-100-2-UV
100 tails at 3m	SEN-100-3-CL	SEN-100-3-UV
150 tails at 1m	SEN-150-1-CL	SEN-150-1-UV
150 tails at 2m	SEN-150-2-CL	SEN-150-2-UV
150 tails at 3m	SEN-150-3-CL	SEN-150-3-UV
200 tails at 1m	SEN-200-1-CL	SEN-200-1-UV
200 tails at 2m	SEN-200-2-CL	SEN-200-2-UV
200 tails at 3m	SEN-200-3-CL	SEN-200-3-UV



Outer sheathing OD: 2.6mm
Outer sheathing ID: 1.5mm
3 x \varnothing 0.75mm fibre tails

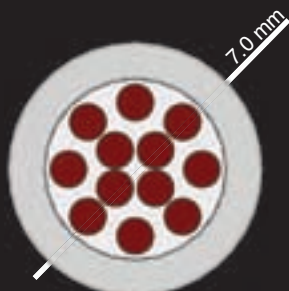


polymer stariflex fibre

As sidesparkle fibre but with a wider outer diameter and 12 fibre tails, Stariflex can be used in lengths of up to 8m with either 100W halogen or 150W metal halide light sources in areas with low ambient light. Lengths of up to 3m give the best effect.

ordering codes

No. tails and sizes	Stariflex clear harness	Stariflex UV harness
12 tails at 1m	STF-12-1-CL	STF-12-1-UV
12 tails at 2m	STF-12-2-CL	STF-12-2-UV
15 tails at 1m	STF-15-1-CL	STF-15-1-UV
15 tails at 2m	STF-15-2-CL	STF-15-2-UV
20 tails at 1m	STF-20-1-CL	STF-20-1-UV
20 tails at 2m	STF-20-2-CL	STF-20-2-UV



Outer sheathing OD: 7mm
Outer sheathing ID: 5mm
12 x \varnothing 1mm fibre tails



These harnesses are all supplied with standard 30mm common ends and heat sealed terminations. Other lengths are available to special order, please contact us to discuss your requirements.

We also have side sparkle fibre available in either standard or UV coated with a single core of 1mm polymer fibre - contact us for details of this.

cracked glass sideglow fibre

Cracked Glass Side Glow fibre consists of many fine strands of glass fibre in a clear PVC sheath. The glass is cracked at intervals along its length to allow light to escape. The numerous fine threads of glass also collect light from each other to give a different effect to the Polymer Side Sparkle or the Stariflex fibres.

Cracked Glass Side Glow fibre, which has been used in applications for last 20 years, has the advantage for decorative applications where it is to hang vertically. It has more weight than the Polymer Sidesparkle and therefore hangs straighter. It is however not as suited to applications where it may be played with. If the sheathing of the fibre is broken during handling or play, small glass fibres may escape. For applications where the fibre will be handled, we would always recommend the very safe Polymer Sidesparkle or Stariflex fibre.

Cracked Glass Side Glow is always supplied with the ends heat sealed.

cracked glass sideglow technical specification

Item	Cracked glass fibre specification
Outer diameter	2.2mm
Outer sheathing	Transparent PVC
Max. no. tails per harness	400
Max. run length	10m with metal halide light source 4m with tungsten halogen light source

Please contact our sales team for more information on glass sideglow harnesses.



we manufacture our own fibre

Unlike the majority of lighting companies selling fibre optic sensory lighting kits and products, here at Universal Fibre Optics, we manufacture our own side sparkle fibre harnesses.

Our sheathing material and fibre are certified as phthalate free. The fibre strands in these harnesses are cracked to let light escape from the sides.

Available in either clear or coloured UV reactive sheathing, we can supply both ready terminated harnesses and complete rolls of fibre for use in your own applications.



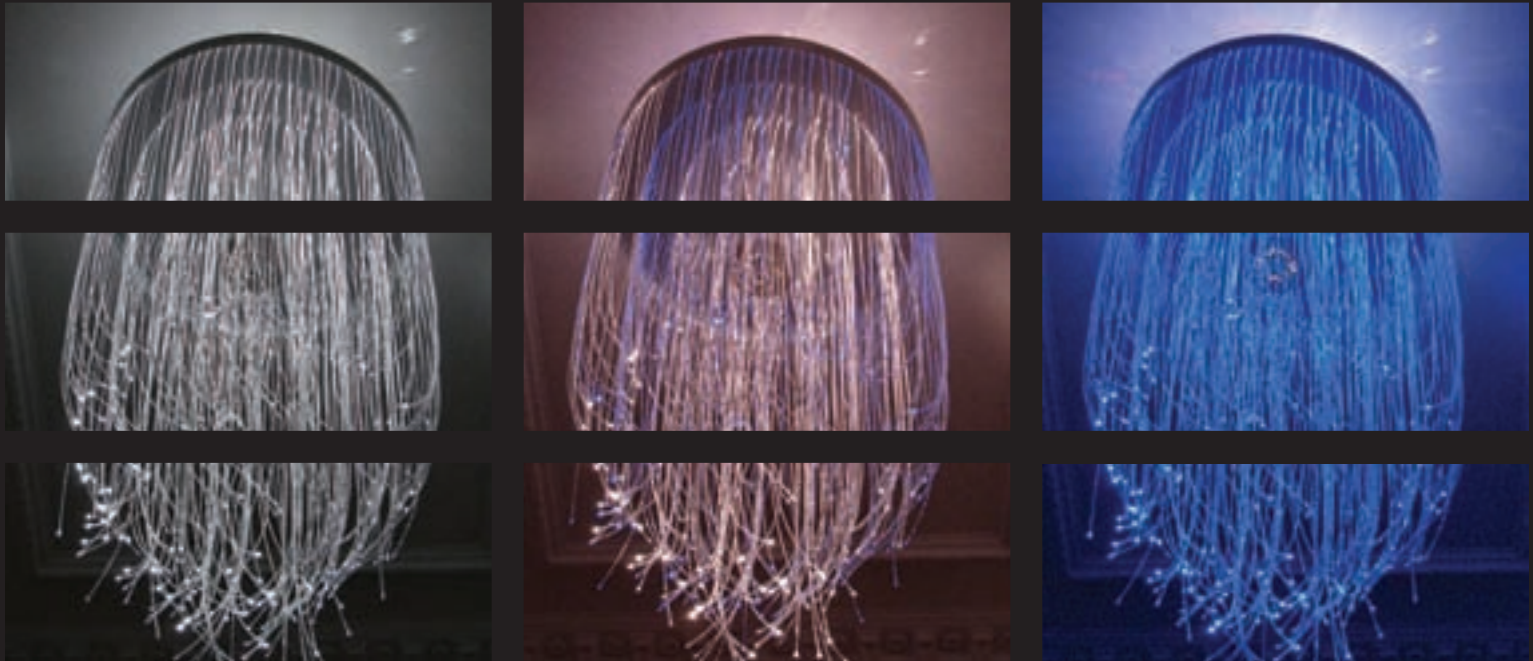
Universal Fibre Optics are the UK's only manufacturer of raw fibre for fibre optic lighting and a major world manufacturer of complete systems and components.

We have extensive experience of providing fibre optic lighting for all applications.

We can also supply a diverse range of kits for self installation, from the best selling star ceiling kits, to the submersible spa and bath lighting kits. All our products are manufactured in-house to the highest possible standards.

Please visit our website for more information on our range of products and the services we can provide.

www.fibreopticlighting.com



6 Home Place
Coldstream
Berwickshire
United Kingdom
TD12 4DT

tel: +44 (0)1890 883416
fax: +44 (0)1890 883062
email: info@fibreopticlighting.com
www.fibreopticlighting.com