



Crystal Fittings Range

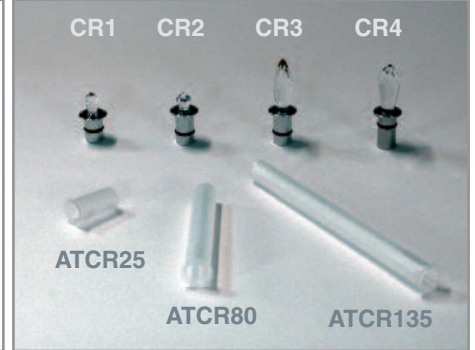
Overview

The UFO range of crystal fittings are all designed to give a bright sparkling point of light and a pattern of light cast onto the surrounding surfaces. They are made from high quality European real crystal glass. Four crystal fittings are available, each of a different size and shape to give alternative patterns and spreads of light. The crystals are attractive with either a white light source or colour changing model.

The crystals are designed for use with 1.8mm active diameter glass fibre via a special UFO Crystal Ferrule connection.

The crystal flanges are finished in Chrome or Gold colours as standard. Other finishes are available at extra cost.

Accessory tubes in three lengths are available to allow easy mounting through single or double skinned substrates. These are one diameter to fit all crystals.

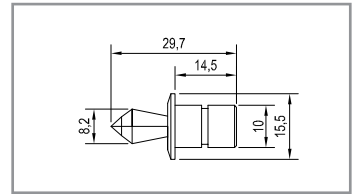
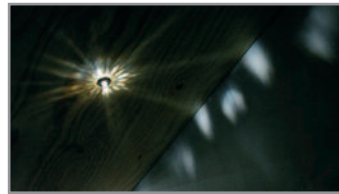


Specification

CR1

Flange Diameter = 15.5mm
Crystal Diameter = 8.2mm
Overall Length = 29.7mm
Recess depth = 14.5mm
Finishes: Chrome; Gold; Special

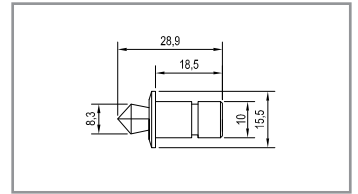
All dimensions are approximate and do not include ferrule or gland.



CR2

Flange Diameter = 15.5mm
Crystal Diameter = 8.3mm
Overall Length = 28.9mm
Recess depth = 18.5mm
Finishes: Chrome; Gold; Special

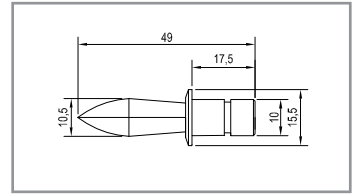
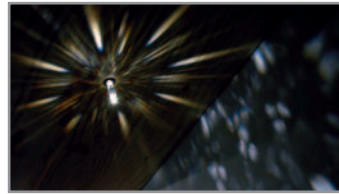
All dimensions are approximate and do not include ferrule or gland.



CR3

Flange Diameter = 15.5mm
Crystal Diameter = 10.5mm
Overall Length = 49.0mm
Recess depth = 17.5mm
Finishes: Chrome; Gold; Special

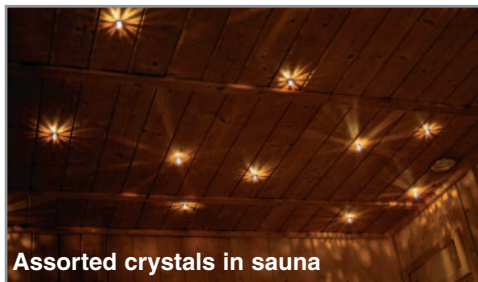
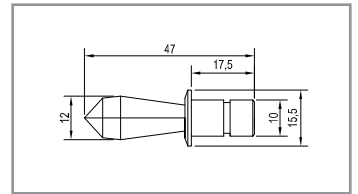
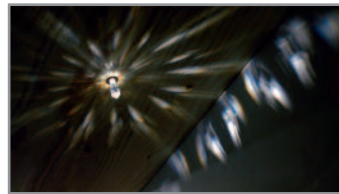
All dimension are approximate and do not include ferrule or gland.



CR4

Flange Diameter = 15.5mm
Crystal Diameter = 12.0mm
Overall Length = 47.0mm
Recess depth = 17.5mm
Finishes: Chrome; Gold; Special

All dimensions are approximate and do not include ferrule or gland.



Assorted crystals in sauna

Accessory Tubes

ATCR25 = 25mm long

ATCR80 = 80mm long

ATCR135 = 135mm long

All with 15.3mm x 0.9mm flange in translucent plastic with internal and external ribbed finish to grip hole and crystal. Drill 12mm hole and insert tube from below. Pass fibre from above through tube and insert into crystal. Push crystal into tube.



CR4 mounted in ATCR80