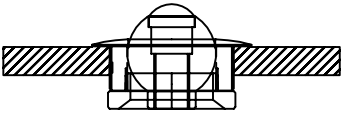


UFO 30H Hermetic Fitting

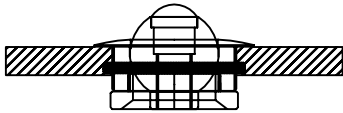
Fitting Instructions



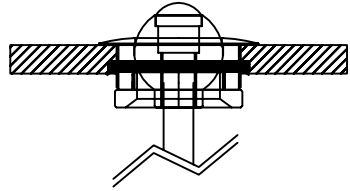
Cutout required: 37mm



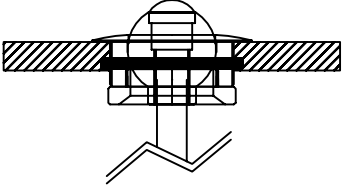
(1) Insert fitting into mounting hole.



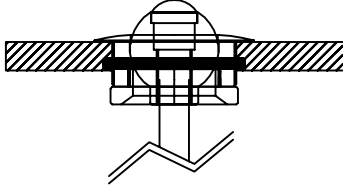
(2) Loosely fit knurled nut onto underside of fitting.



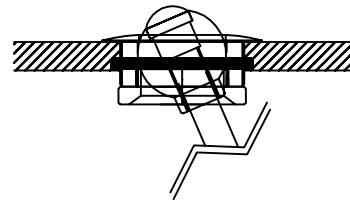
(3) Hold fibre optic tail and screw fitting onto ferrule. Tighten nut to secure fitting in place.



(4) A narrow beam of light is produced when the fitting is screwed on with a few threads.



(5) A wide beam of light is produced when the fitting is screwed on most of the way.



(6) Rotate eyeball to desired angle.