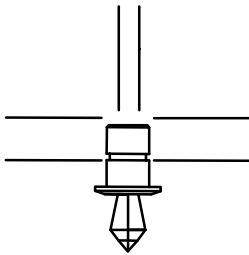
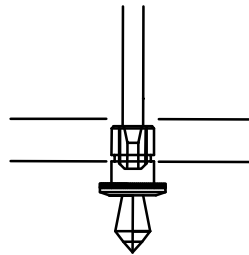


Crystal Fittings, without accessory tube.

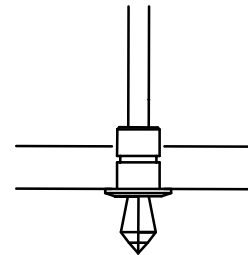
Size of cutout: 11mm



(1) Feed fibre optic tail through cutout and push into fitting as far as it will go.
Note: DO NOT bend fibre



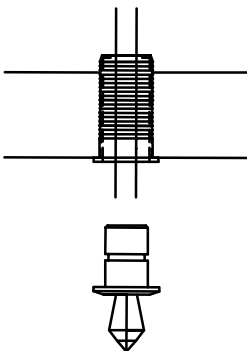
(2) If required, apply some silicone sealant to rim of fitting for additional bonding.



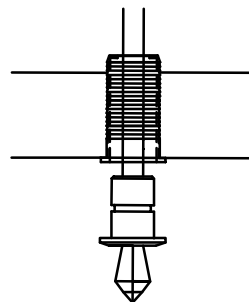
(3) Push firmly fitting into cutout.

Crystal Fittings, with accessory tube.

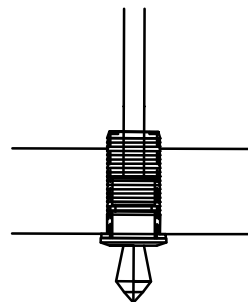
Size of cutout: 12mm



(1) Push accessory tube up through cutout and feed fibre optic tail down through tube.
Note: DO NOT bend fibre



(2) Push fibre optic tail into fitting as far as it will go.



(3) Push fitting firmly into accessory tube.

Universal Fibre Optics Limited

Home Place
Coldstream
TD12 4DT
United Kingdom

tel: +44 (0)1890 883416
fax: +44 (0)1890 883062
email: info@fibreopticlighting.com
for sales or London service office