



CARINA TUNEABLE LED LIGHT SOURCE PRODUCT SPECIFICATION SHEET

Rev. D2 UK

The innovative Carina tuneable LED light source is perfect for situations where total control is required over the light output from fibre optic fittings.

The Carina allows control over dimming as well as the colour temperature to be varied between two values.

See the table on the next page for the array options available.

Couple this functionality with a choice of interchangeable control modules - manual control via in-built potentiometers, DALI or 0-10V / 1-10V control - and you have the ultimate in contrrollable fibre optic light output.

The Carina offers high CRI and bright white light output which is perfect for any display lighting application. Fitted with a standard 30mm fibre connector, this unit is equally suited to new projects or for retro-fitting to existing fibre optic installations where a replacement light source may be required.

Universal Fibre Optics Ltd
Home Place \ Coldstream
TD12 4DT \ UK
+44 (0)1890 883416
www.ufo.lighting

Universal Fiber Optics USA LLC
1749 Northgate Blvd
Sarasota \ FL34234 \ USA
941-343-8115
www.fiberopticalighting.com

UFO Licht GmbH
Andreasstraße 20
93059 Regensburg \ DE
+49 (0)9491 955880
www.ufo-licht.de



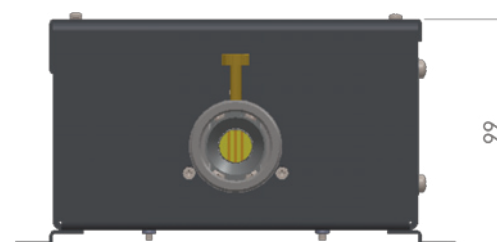
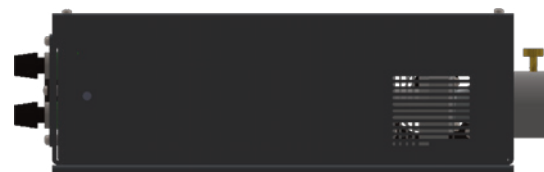
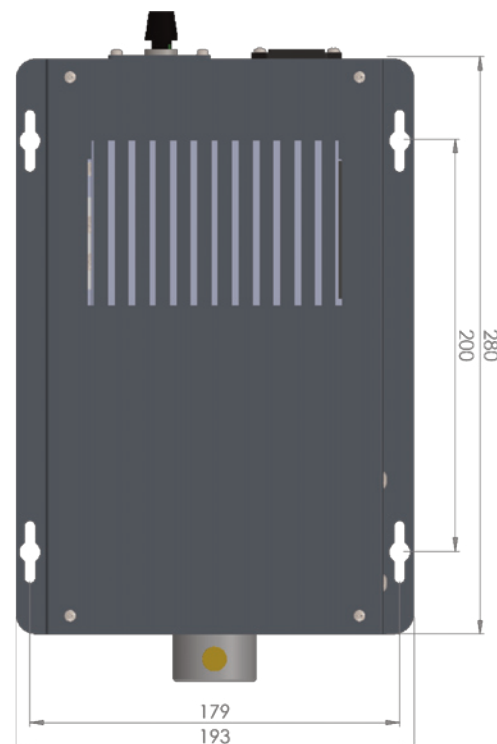
General Information	
Port Connector Size	30mm diameter
Fibre Type	Glass / PMMA
Material / Finish	Aluminium - grey powdercoat (RAL 7024)
Dimensions (L x W x H)	280mm x 193mm x 99mm
Operating Environment	Indoor use only - IP20
Ambient Temperatures	-10° C to +45°C
Supply Voltage	110 - 240VAC

Lighting & Control Information	
Control Functionality	0-10V, 10-10V, DALI, manual
Controls	Tuneable colour temp. & dimming
Manual Control Module	Has 2 potentiometers mounted on the units body - 1 to control dimming and 1 to control CCT output
DALI-2 DT8 Control Module	<ul style="list-style-type: none"> - DALI-2 DT8 certified - Control over colour temperature and dimming - Compatible with industry standard DALI-2 DT8 devices - Commission & manage lighting fixtures via any DALI-2 certified controller
0-10V / 1-10V Control Module	<ul style="list-style-type: none"> - 0-10V & 1-10V control protocol - Control over colour temperature and dimming - Compatible with industry standard 0-10V current sourcing and 1-10V current sink wired control devices - Dim-to-off hysteresis with turn off at 0.85V and tun on at 0.95V

LED Array Data	
LED Array Type	Bridgelux white light
LED Array Power	18W
LED Array Life (L70, B10)	>50,000 hours (typical)
Tuneable CCT, CRI & Lumen Output Options	2700K - 5000K @ >90 CRI / 1742-(2001) lm 2700K - 5000K @ 98CRI / 1510-(1762) lm

Ordering Code Selector			
Model	UFO CARINA [UFO CAR]		
Colour Temp. & CRI	2700-5000K / 90CRI [2750-90]	2700-5000K / 98CRI [2750-98]	
Control	Manual [M]	DALI [D]	0-10V or 1-10V [V]

Code
UFO CAR
[]
[]



e.g. UFO CAR-2750-90-M