

# PRODUCT SPECIFICATION SHEET

## Sirius Aqua Decorative IP67 LED Light Source



Rev. C7



A very powerful fibre optic light source, utilising LED technology, featuring full IP67 ingress protection and powered by an external 24V DC power supply unit.

Extremely high power output makes this light source suitable for multiple lighting tasks where traditionally metal halide units have been employed. Almost silent in operation, the Sirius outputs light which is around 20% brighter than a 150W metal halide lamp.

A choice of either a 6 colour colourwheel or a twinkle effect wheel can also be installed, and this offers the same control options as the dimming effects; manual, 0-10V or DMX. The unit also offers optional separate feed control.

The Sirius Aqua has an inbuilt manual dimmer located behind a protective panel, and dimming is also controllable via either DMX or 0-10V.

With a standard 30mm fibre port connector, this light source is equally suited to new projects or for retro-fitting to existing fibre optic installations - particularly for separate feed light sources using the optional interface.

Please note that although this light source is fully IP67 rated and can be used in wet/outdoor areas, it is not suitable for submersion in water and it should not be buried underground.

### GENERAL INFORMATION

Port connector size	30mm diameter
Fibre type	Glass / PMMA
Material/Finish	Hard anodised aluminium
Dimensions (L x W x H)	330mm (13") x 240mm (9.4") x 164mm (6.5")
Weight	6.66kg
Operating Environment	External - IP67 rated
Min Ambient Temp.	-10°C
Max Ambient Temp.	+45°C

### LIGHTING AND CONTROL INFORMATION

Dimming Functionality	Manual \ DMX \ 0-10V dimming
DMX Functionality	User addressable to 512
DMX Channels	3 channels
Effects Wheel Options and Functionality	Colour and twinkle controlled by 0-10V, DMX and manual

### LED ARRAY DATA

LED Array Type	White light
LED Array Power	90W
LED Array Model	LED engine L2P 24 die emitter
LED Array Life (L70, B10)	> 36,000 hours
Cool White LED Array	5500K \ 75CRI \ 5700lm
Neutral white LED array	4000K \ 82CRI \ 5300lm
Warm white LED array	3000K \ 83CRI \ 4650lm

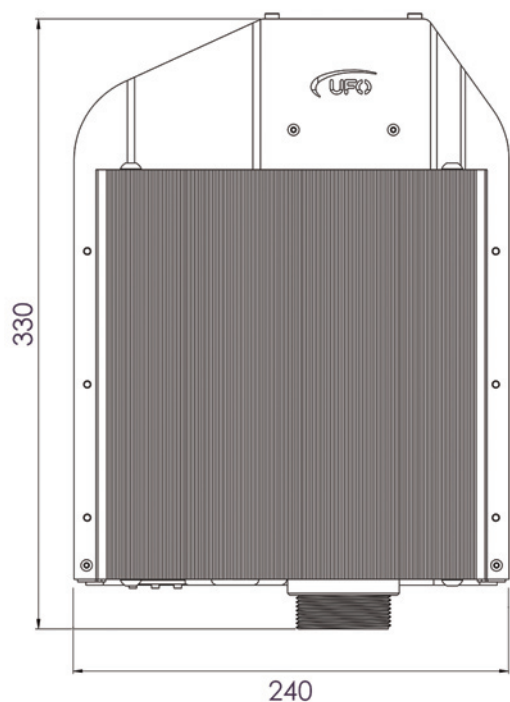
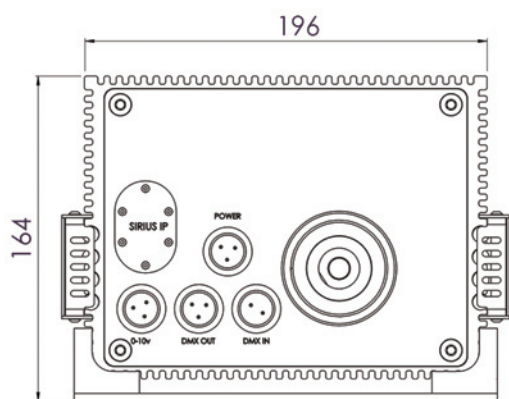
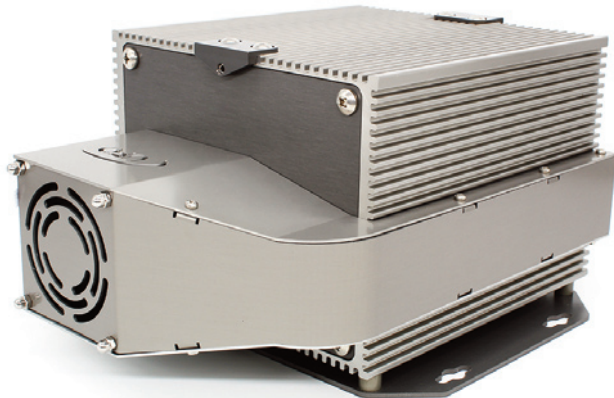
### SEA WATER / SALINE ENVIRONMENTS

Please be aware that UFO will not specify, supply or install this light source for use in any area where corrosion or damage from saline may occur. This includes near the sea, on ships or in any other areas where the light source would be in an unprotected area.

Damage caused by salt water due to improper, unprotected siting of the light source will void any and all UFO warranties on the product. UFO strongly recommend that the light source is not installed in any location where such damage may occur.

## CLEARANCE / VENTILATION

It is imperative that a gap of 200mm (8") is left around the unit. This is to allow air to circulate and prevent overheating. The location must have free ventilation and must not have an ambient temperature higher than that specified for the unit.



## ELECTRICAL CHARACTERISTICS

Supply Voltage	90-264Vac
Mains Running Current	0.42A @ 240Vac
Mains Voltage VA rating	100VA
External PSU Type	Meanwell, 24VDC, IP67, Type HL Driver
Motor Type	Rotalink 25C13/YSOLPSL3E 12V 60:1
Fan Type	ebm-papst, 80mm, IP68, 32dBA

## AVAILABLE ACCESSORIES

PS-IP-AW-24-120-UK PS-IP-AW-24-120-EU PS-IP-AWB-24-100-US	24V 120W IP67 PSU, IP Connector & Cable Assembly (UK, EU or USA options available)
SF-IPSI-AW-CW-N	Separate Feed Interface - complete with 2m cable & IP connector
AC-CBL-2-DMX-UKEU AC-CBL-2-DMX-US	DMX Cable Assembly - complete with 2m cable & IP connector (UK/EU or USA options)
AC-CBL-2-10V-UKEU AC-CBL-2-10V-US	0-10V Cable Assembly - complete with 2m cable & IP connector (UK/EU or USA options)
RE-IPSI-AW-CWD-N	Sirius Aqua Remote Control

## LIGHT SOURCE PRODUCT CODES

MODEL	COLOUR TEMP	EFFECTS	SUPPLY	SENSOR
UFO SIRIP	Cool White	CW	White Light	X
	Warm White	WW	Colour Wheel	C
	Neutral White	NW	Twinkle Wheel	T
			Single Feed	X
			Separate Feed	F
			Sensor	S
			No Sensor	X
UFO SIRIP				

e.g, UFO SIRIP - CW - C - F - S

For the configuration of a twinkle wheel with sensor, the wheel is supplied with a cut out segment. The wheel in motion will give an uninterrupted twinkle by rotating backwards and forwards either side of the segment. When stop is selected the wheel will come to rest at the segment giving unobstructed white light output.



IP67



Universal Fibre Optics Ltd  
Home Place \ Coldstream  
TD12 4DT \ UK  
+44 (0)1890 883416 \ [www.ufo.lighting](http://www.ufo.lighting)

Universal Fiber Optic Lighting USA LLC  
1749 Northgate Blvd  
Sarasota \ FL34234 \ USA  
941-343-8115 \ [www.fiberopticlighting.com](http://www.fiberopticlighting.com)

UFO Licht GmbH  
Andreasstraße 20  
93059 Regensburg \ Deutschland  
+49 (0)9491 955880 \ [www.ufo-licht.de](http://www.ufo-licht.de)