



REVISION: B1

Product Overview

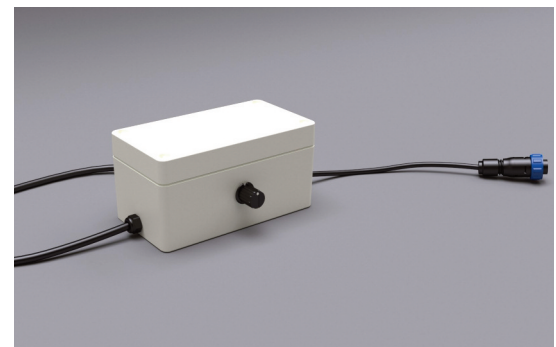
The UFO Sirius Aqua LED Separate Feed and Remote interfaces are designed to be used to replace separate feed IP Tungsten Halogen and Metal Halide Light sources such as the Aurora, Compact and Ultima with a separate feed plug and play LED replacement, or act as a remote control for the Sirius Aqua IP LED. Both interfaces have motor speed control and the Remote Interface also has LED dimming functionality.

Technical Information

Compatible Light Sources	Sirius Aqua
Power Supply	240V AC
Remote Unit Output	LED dim, decorative wheel speed & stop/start
Separate Feed Output	Decorative wheel speed & stop/start on Mains supply off
Dimensions	120mm x 90mm x 60mm
Ingress Protection	IP66
Temperature Range	-20°C to 45°C



Separate Feed Interface



Remote Interface

Connection

Refer to the Sirius Aqua User Guide and the Remote and Separate Feed User Guide before connecting up the interface. All connections are to be made before connecting power.

Notes

- The UFO Sirius Aqua Separate Feed interface is designed to be used to replace IP separate feed Tungsten Halogen and Metal Halide Light with an IP LED replacement.
- The UFO Sirius Aqua Remote Control interface is designed to be used to provide external functionality control for the Sirius Aqua
- Two mains supplies are required for the UFO Sirius Aqua Separate Feed interface, one dedicated for the LED and one switched for the decorative motor
- The Sirius Aqua Remote interface is powered from the same mains supply as the Sirius Aqua
- The correct interface must be ordered to match the UFO Light Source as detailed in the table below

Product Codes

MODEL	INTERFACE PRODUCT CODE
Sirius Aqua Separate Feed	SF-SIIP-AW-XX-XX-CWD-N
Sirius Aqua Remote Control	REM-SIIP-AW-XX-XX-CW-N

